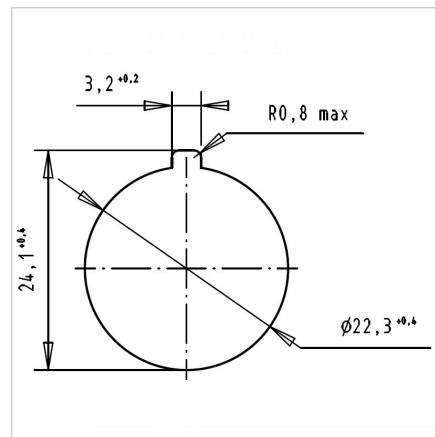
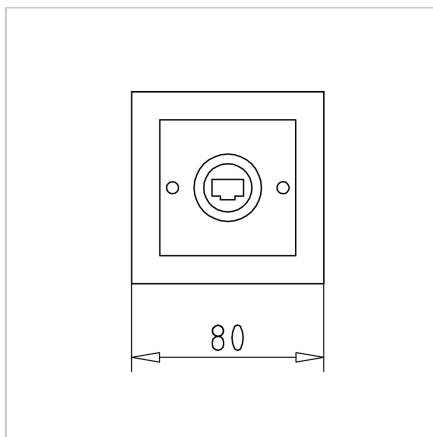
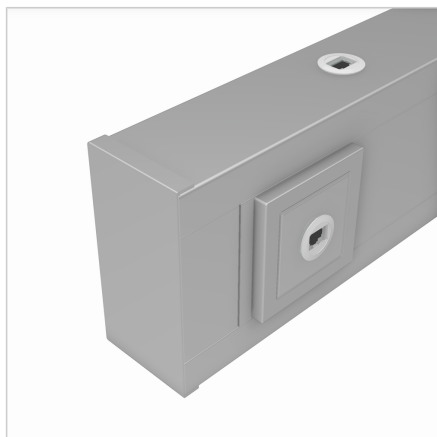


JUNCTION BOX DATA CAT 6 WITH PLUG SOCKET CABLE DUCT 130

Code: 320729/0

[Link to the product →](#)



Technical data/items supplied

- Bushing RJ 45, Link E, up to 250 MHz
- Horizontal mounting
- - Complete junction box with output socket and frame for installation in cable duct
 - separate input socket for free positioning
 - patch cable L = 2 m for connecting the two sockets
- Weight = 0.125 kg/piece

Applications

- For cable duct 130 **part no. 320715/0**

Assembly

- Mount junction box in cable duct and fasten
- Cover for cable duct **part no. 320716/0** assemble and press on as required
- Insert the Ø 22.5 mm hole at the desired position of the input bushing and fasten the bushing.
- Connect the input and output sockets within the channel using a patch cable.