



MiniTec

Facts & figures

THE ART OF SIMPLICITY

MiniTec has continuously developed from a specialist for miniature guides continuously to a leading technology company and special machine builder.

Today, 420 experts at 11 locations in Germany, France, the USA, the UK, Spain, Slovenia and China develop customized solutions for our customers. At the same time, more than 60 partners worldwide provide reliable service and competent advice.

Our solutions are just as individual as our customers' requirements. As a full-service manufacturer, we realize intelligent plants and special machines based on our design system for a wide variety of tasks in all major industrial sectors: from automotive, chemical and electrical engineering to energy supply, aerospace, mechanical engineering, metal and pharmaceutical industries. In line with the high technical standards, the motto for our complete solutions is: The Art of Simplicity.

-  **1986**
Founded
-  **420**
employees
thereof 280 in Germany
-  **60**
Sales and
service partners
around the world
-  **Business award**
„Innovativer Mittelstand“
Award
„Attraktiver Arbeitgeber
Rheinland-Pfalz“
Honorary award
of the region Westpfalz
-  **11**
Locations
Germany, France, Slovenia,
United Kingdom, Spain, USA,
China

LOCATIONS WORLDWIDE

MINITEC GMBH & CO. KG (GERMANY)

MiniTec-Allee 1 | 66901 Schönenberg-Kübelberg
Phone: +49 6373 81270 | Fax +49 6373 812720
info@minitec.de | www.minitec.de

MINITEC GMBH & CO. KG (GERMANY)

Nickelsweiher 6 | 66914 Waldmohr
Phone: +49 6373 81270 | Fax +49 6373 812720
info@minitec.de | www.minitec.de

MINITEC GMBH & CO. KG (GERMANY)

Fürther Straße 33 | 90513 Zirndorf
Phone: +49 911 2789000 | Fax +49 911 27890099
zirndorf@minitec.de | www.minitec.de

MINITEC SMART SOLUTIONS GMBH (GERMANY)

Zollamtstraße 7 | 67663 Kaiserslautern
Phone: +49 6373 8127 350 | Fax +49 6373 812720
kontakt@mss-digital.de | www.minitec-smart-solutions.net

MINITEC BERLIN GMBH (GERMANY)

Melitta-Schiller-Straße 18 | 12526 Berlin
Phone: +49 30 2359 8000
berlin@minitec.de | www.minitec.de

MINITEC ESPAÑA S.L.U. (SPAIN)

C/ Carlos Jiménez Díaz, 7. Pol. Ind. La Garena
28806 Alcalá de Henares, Madrid
Phone: +34 916 562 652
info@minitec.es | www.minitec.es

MINITEC S.N.C. (FRANCE)

2, rue Charles Desgranges | 57214 Sarreguemines
Phone: +33 387 276870 | Fax +33 387 276877
info@minitec.fr | www.minitec.fr

MINITEC.AT GMBH (AUSTRIA)

Beethovenstraße 12 | 2380 Perchtoldsdorf
Phone: +43 1 8659559
office@minitec.at | www.minitec.at

MINITEC 4NAG (SWITZERLAND)

Honeywell-Platz 1 | 8157 Dielsdorf
Phone: +41 44 5751500 | Fax +41 44 5751501
info@minitec.ch | www.minitec.ch

MINITEC SOLUTIONS SRL (ROMANIA)

Str. J.H. Pestalozzi Nr. 22 | Timisoara 300115
Phone: +40 722 229 134
office@minitec.ro | www.minitec.ro

MINITEC D.O.O. (SLOVENIA)

Teharska cesta 41 | 3000 Celje
Phone: +386 59 071 390 | Fax +386 59 071 399
info@minitec.si | www.minitec.si

MINITEC SLOVAKIA S.R.O. (SLOVAKIA)

Rabčická 332 | 029 44 Rabča
Phone: +421 43 5524350 | Fax +421 43 5524352
info@minitec-slovakia.sk | www.minitec-slovakia.sk

MINITEC HELLAS S.A. (GREECE)

Ag. I. Theologou 115 | 13672 Acharnes, Athen
Phone: +30 210 2401444
info@minitechellas.gr | www.minitechellas.gr

MINITEC UK LTD. (UNITED KINGDOM)

Unit 1 Telford Road | Houndmills Industrial Estate
Basingstoke, Hampshire RG21 6YU
Phone: +44 1256 365 605
info@minitec.co.uk | www.minitec.co.uk

MINITEC FRAMING SYSTEMS LLC (USA)

5602 County Road 41 | 14425 Farmington, NY
Phone: +1 585 9244690 | Fax +1 585 9244821
sales@minitecframing.com | www.minitecframing.com

MINITEC AUTOMATION TECHNOLOGY (USA)

7214 Gateway Park drive | Clarkston, Michigan 48346
Phone: +1 248 620 1820 | Fax +1 248 620 0850
sales@minitecautomation.com | www.minitecautomation.com

MINITEC SYSTEM TECHNOLOGY CO. LTD. (PR CHINA)

Plant No. 10; No. 103 ChengMenJin Road | Taicang 215400
Phone: +86 512 5320 8880 | Fax +86 512 5320 8879
info@minitec.com.cn | www.minitec.com.cn

MINITEC SA (SOUTH AFRICA)

48 York Road, North End | Port Elizabeth 6000
Phone: +27 41 3914795
info@minitec.co.za | www.minitec.co.za



MiniTec partners worldwide

Australia | Austria | Belgium | Bosnia and Herzegovina | Brazil | Bulgaria | Canada | China | Croatia
Czech Republic | Estonia | Finland | France | Greece | Hungary | India | Italy | Latvia | Liechtenstein
Lithuania | Luxembourg | Malaysia | Mexico | Montenegro | Netherlands | New Zealand
Northmacedonia | Poland | Portugal | Romania | Russia | Serbia | Singapore | Slovakia | Slovenia
South Africa | Spain | Sweden | Switzerland | Turkey | Ukraine | United Kingdom | USA | Vietnam

MiniTec GmbH & Co. KG | MiniTec-Allee 1 | 66901 Schönenberg-Kübelberg | info@minitec.de | www.minitec.de



VEHICLE EQUIPMENT WITH ALUMINUM PROFILES

Living cabins, folding bed, eurobox racks



PRODUCTS



SOLUTIONS



SERVICE

LIVING CABINS
AS AN ASSEMBLY KIT FOR SELF-ASSEMBLY ...

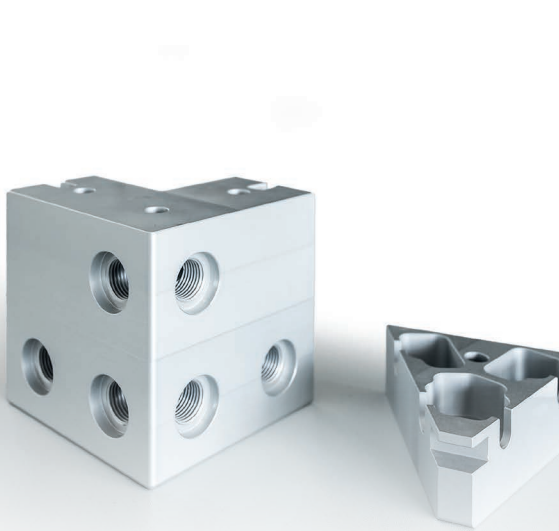
... are planned and constructed by our designers according to your specifications and wishes. The MiniTec profile system offers the highest flexibility, so that the construction can be adapted exactly to your vehicle. We are happy to implement special requests if possible.

The frame construction of the cabin consists of MiniTec aluminum profiles and the specially developed corner connectors for 90° and 45° connections.

For the design of the outer skin and insulation there are several options, depending on the priorities set by the customer. An outer skin made of aluminum sheet can be supplied by us.

If the planning ultimately corresponds to your ideas and conceptions, you will receive your living cabin as an assembly kit for self-assembly.

We will be happy to create an individual offer for you. Please contact us!



FOLDING BED
AS BASIC MODULE OR WITH EXTENSIONS



The folding bed consists of a stable frame made of MiniTec aluminum profiles. During the day it serves as a practical bench, in the evening it can be folded out into a bed in just five seconds. The seat cushion automatically converts into a comfortable mattress. The folding bed fits in all standard VW-bus-sized vans and is available either as a basic module or with a eurobox pull-out (panel set optional). On request, the bed can also be configured to customer specifications in terms of length, height and width.

Table with 2 columns: Item name and Item number. Rows include Folding Bed Basic Modul, Eurobox Pull-out, Mattress incl. cover, Set of panels without Euro box pull out, and Set of panels with Euro box pull out.



The eurobox pull-out and the matching birch wood panels are both optionally available. The pull-out makes optimum use of the storage space under the sitting or lying surface. The euroboxes can be removed either via the pull-out or from the side of the interior.

Table with 2 columns: Configuration and Product dimensions folding bed in mm (length x width x height). Rows include 'as a bench', 'as bed', 'lying surface', and 'eurobox pull-out'.

EUROBOX RACKS
IN MANY VARIANTS



The eurobox rack is available in many variants and is supplied either as an assembly kit for self-assembly or fully assembled. Sliding rails are embedded in the profile grooves for smooth guidance of the euroboxes. When pushed in, the euroboxes lock securely into place. This prevents any slipping or noise during travel. A matching set of panels made of oiled birch wood multiplex boards with milled handle and chamfered edges is optionally available, as well as a matching table top. The construction made of MiniTec aluminum profiles can be extended individually. Other variants are available on request.

Table with 4 columns: Variant number, Variant name, Product dimensions without table top in mm (length x width x height), and Item number. Rows 1-7 describe different rack configurations from 1 row small to 1 row large.

