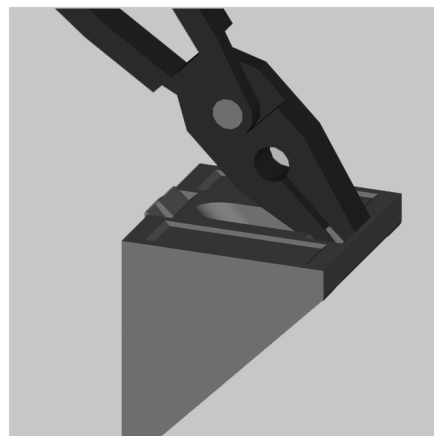
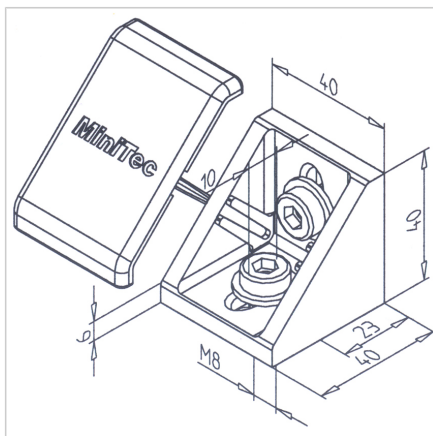
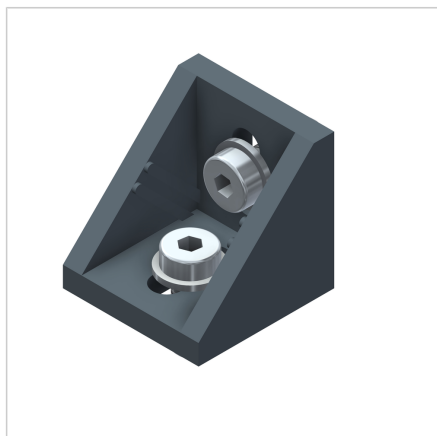


MOUNTING BRACKET 45 GD-Z POWDER COATED

Code: 211349/0

Mounting angle 45 GD-Z for secure angled aluminium profile connections without machining. Enhances precision, durability, and assembly flexibility.

[Link to the product →](#)



Technical data/items supplied

- Fasten to profile groove with supplied hardware
- If non-aligning grooves, break centering tabs with pliers
- Hammer head screw **part no. 21.1370/0** can be used
- Fitting end cap MW 45 GD-Z, **part no. 221024/1**
- Recommended locking torque: 20 Nm

Applications

- General constructions, particularly for subsequent insertion of profiles into existing constructions
- Fastening of surface elements, table tops
- Strengthening of profile constructions

Assembly

- Fasten to profile groove with supplied hardware
- If non-aligning grooves, break centering tabs with pliers
- Hammer head screw **part no. 21.1370/0** can be used
- Fitting end cap MW 45 GD-Z, **part no. 221024/1**
- Recommended locking torque: 20 Nm