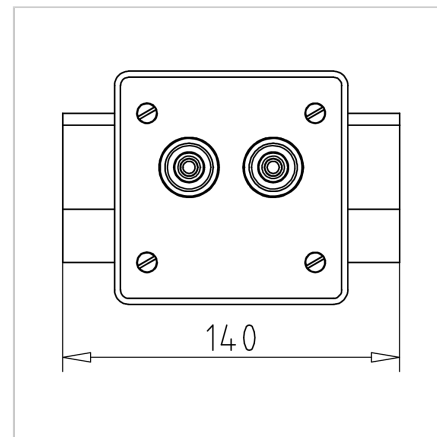
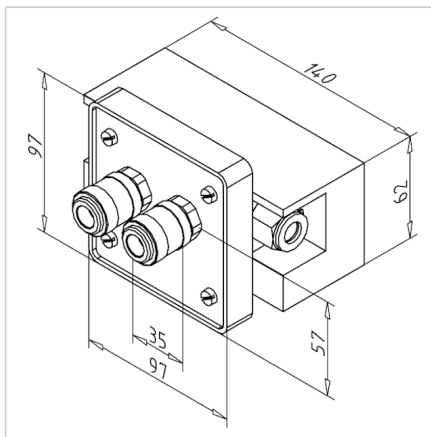
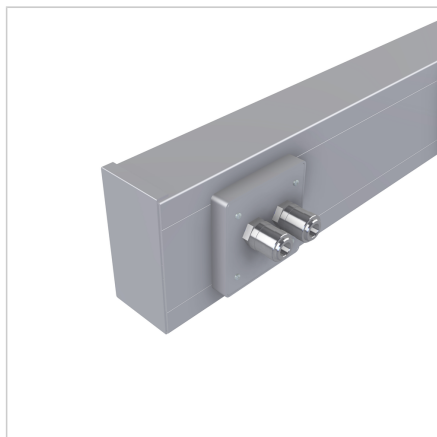


## PNEUMATIC CONNECTION - DUAL FOR CABLE DUCT 130

Code: 320741/0

Double pneumatic connection provides flexible use, quick coupling, and stable air supply to two devices.

[Link to the product →](#)



### Technical data/items supplied

- Complete installation kit
  - Unit for compressed air withdrawal
  - Male bulkhead connector for free positioning
  - 2 m pneumatic hose 10 mm
- Cover aluminium anodised
- Quick connect coupling NW7
- Weight = 0.594 kg/piece

### Applications

- For cable duct 130 **part no. 320715/0**

### Assembly

- Mount pneumatic connection in cable duct and fasten
- Cover for cable duct **part no. 320716/0** assemble and press on as required
- Make Ø 20 mm bore in the position required for the compressed air supply and install the male bulkhead connector
- Insert hose supplied with required length between the pneumatic connection and male bulkhead connector