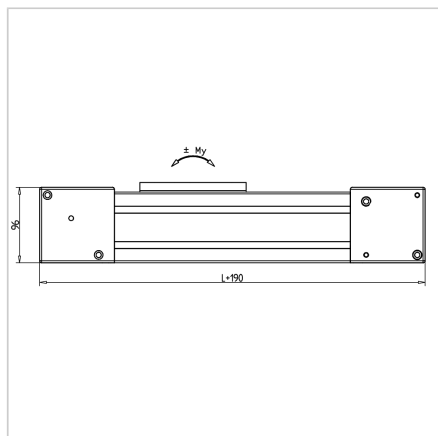
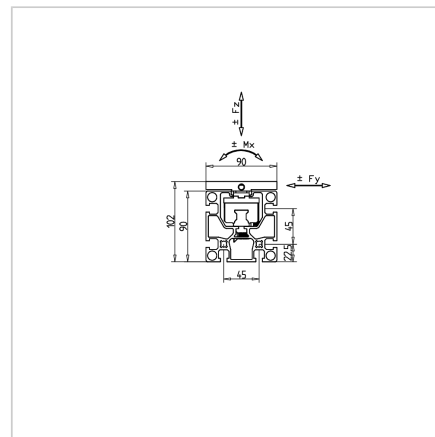
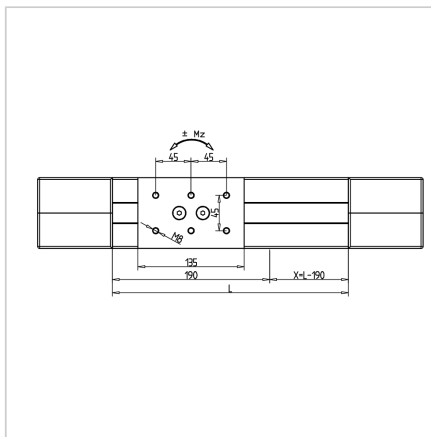
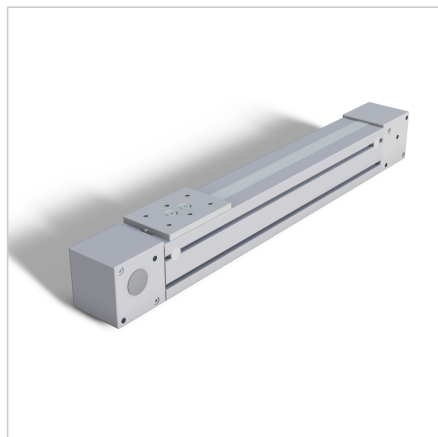


LINEAR MODUL LMZ 90

Code: 280400/0

MiniTec linear technology includes linear module LMZ 90, customizable for various applications.

[Link to the product →](#)



Technical data/items supplied

- Max. allowed belt tension: 3,500 N
- Feed: 200 mm/revolution
- $GL = \text{stroke} + 190\text{mm}$
- Stroke up to 3,800mm
- Compact carrier profile, with standard profile grooves, compatible with the MiniTec construction profiles
- Integrated rail guide Dimension 20
- With 2 guide carriages, covered by the timing belt
- Slide of aluminium, machined at all sides, with integrated timing belt tensioners, prepared for mountings with 6 connection threads M8
- Load rating:
Cdyn: 18,800 N
Cstat: 24,400 N
- Allowable static tilting moment:
Mx: 128 Nm
My: 240 Nm
Mz: 128 Nm
- Weight = (basic weight) 5.2 kg

Applications

- Pick & Place
- Portal robot
- Measuring devices
- Feeds
- Handling devices

Assembly

- For self-supporting installation, the maximum permitted deflection of approx 3.5 mm over 4000 mm must be observed. It is recommended - especially for high dynamic loading - that the module be supported at 300 to 600 mm spacings.

- Extra weight = 0.8 kg/100mm stroke