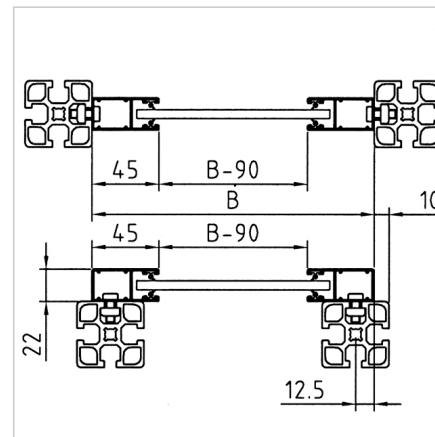
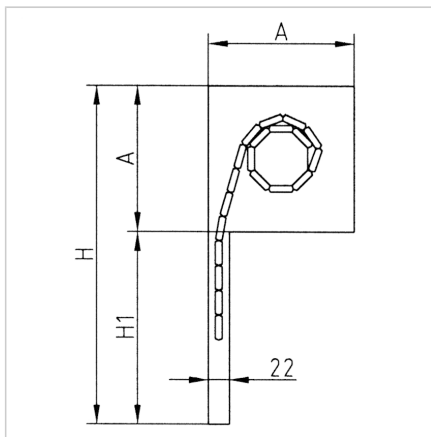


## ROLLER SHUTTER WITH DRIVE

Code: 290403/0

Electric roll-up doors for cabinets, computer stands, and machine guards – compact, safe, and efficient access solution.

[Link to the product →](#)



### Technical data/items supplied

- Aluminium, powder coated, silver
- 2 sides Guide rails; roller shutter box with drive
- Electr. drive 230 V
- Without switch
- Max. width: 2,70 m
- Cable length 2 m
- **Please indicate width B and dimension H**

### Applications

- Cupboard for instruments
- Tool cabinets
- Output switch
- Computer racks
- Machine guards

### Assembly

- Connect the roller shutter box to the guide rails
- Fasten the guide rails and roller shutter box to the profile frame
- Roller shutter box A = 167.5, H to 2.20 m
- Stroke H1: H-A