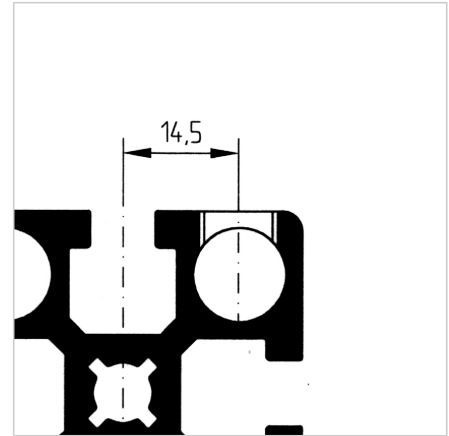
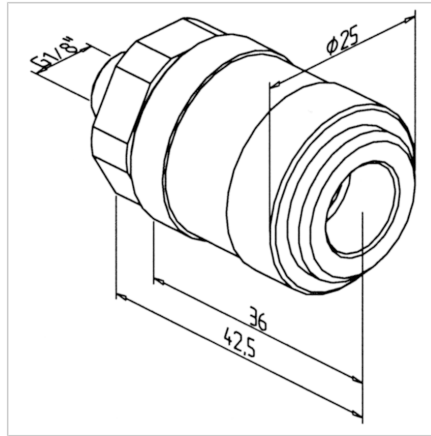
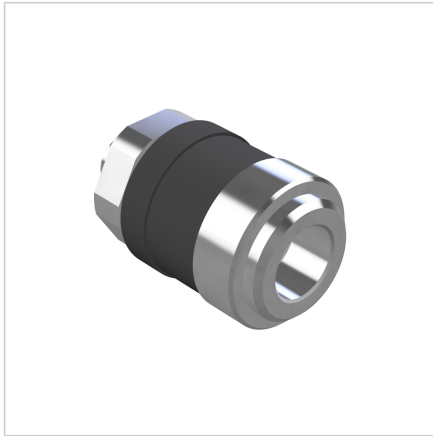


## SNAP COUPLING G 1/8"

Code: 241109/0

[Link to the product →](#)



### Technical data/items supplied

- Brass, nickel-plated
- NW 7 mm
- Connecting thread G 1/8", SW 22
- Weight = 0.087 kg/piece

### Applications

- To connect directly to the profile panel or frontally at the bore  $\varnothing 11.7$  mm

### Assembly

- Thread G 1/8 in profile face, distance thread centre from centre of profile groove: 14.5 mm