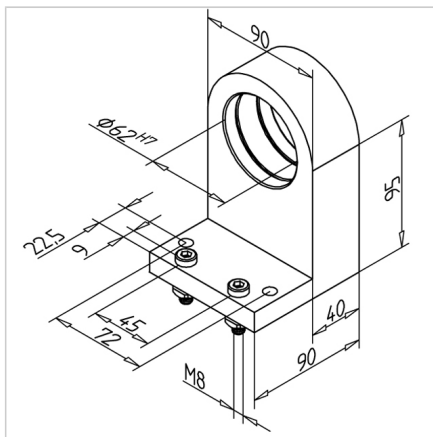
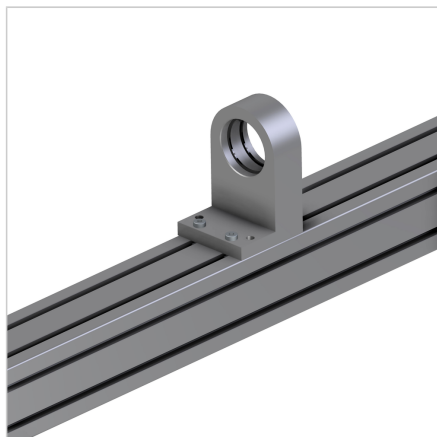


UPRIGHT BEARING

Code: 280158/0

Upright bearing for large swivel frames and mounting shafts, rollers, or axles lengthwise or crosswise in the profile.

[Link to the product →](#)



Technical data/items supplied

- Aluminium, bright
- With fastening material steel, zinc plated
- 2 retaining rings for ball bearing
- Without ball bearing
- Weight = 1.180 kg/piece

Applications

- Large swivelling frame
- Bearing of shafts, axles, rollers and rolls, lengthwise and crosswise in the profile

Assembly

- Mounting hole suitable for radial ball bearings 6206 2RS **part no.** 50.0977/1
- Fasten to profile groove with supplied hardware